

UNIT4

In Business for You

EXTENSION VERSUS INTEGRATION



Extension versus Integration

The Unit4 People Platform is a microservices-based SaaS architecture that underpins the delivery of intelligent enterprise applications. It provides the foundation for your organization to innovate and deliver great experiences for your people.

What are the Extension capabilities and Integration capabilities?

As part of the People Platform both Extension capabilities and Integration capabilities are crucial parts enabling customers to use low-code/no-code tools to more easily change, grow and automate tasks and processes by connecting and creating extensions, integrations and applications.

Extension capabilities and Integration capabilities can be used separately or together for solving alike challenges, however the way they work and their purpose is quite different. This paper will provide the reader with a guidance on when to use what.



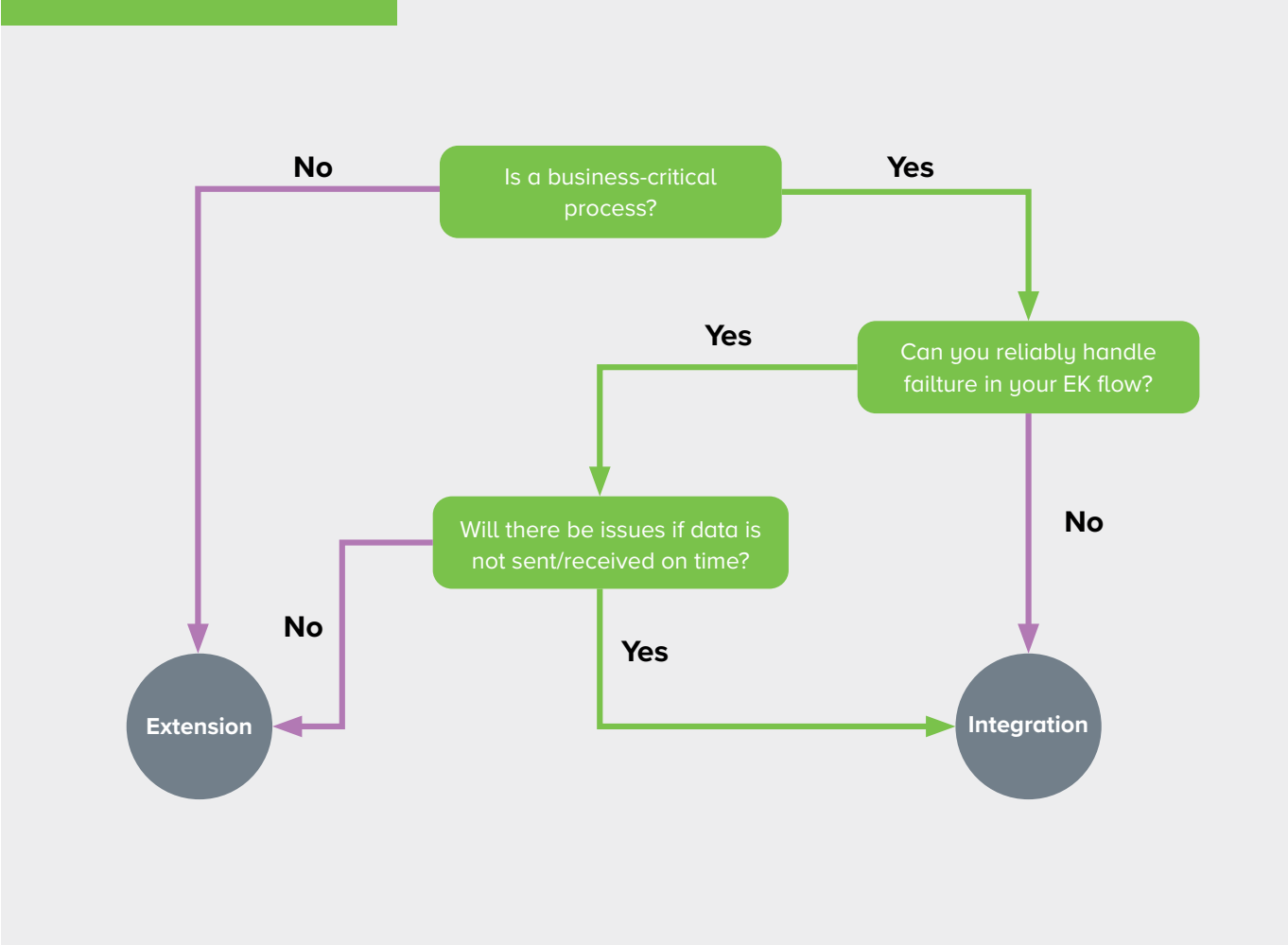
What don't they do?

Neither Extension capabilities nor Integration capabilities support in-screen and in-process customizations. Both are low code services that do not replace ACT tooling nor AG16 tooling.

In order to make the differences clear we created the table below:

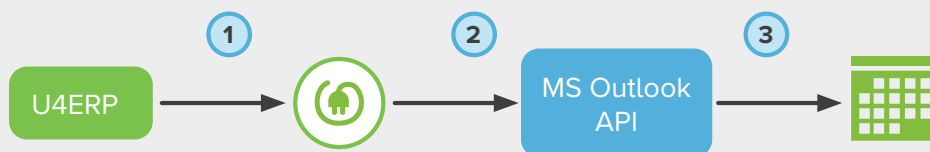
	Extension capabilities	Integration capabilities
Purpose	Logical extension	Business critical integration
	Automate processes, create new business logic and connect different systems and services using APIs.	Validated exchange of data between 2 systems
	Orchestrator	Interface between 2 systems
Characteristics	If This Then That logic (ITTT)	Encompasses secret management, end-to-end message tracking and logging and monitoring
	Templating system with a set of predefined actions and triggers	Using industry standard Enterprise Integration Patterns through XML
	Customer specific	Designed once, multiple customers can subscribe to the same integration
	API/Json based and knowledge required	Enterprise Integration Patterns , Apache Camel and XMLSpring based and knowledge required
Secret support	No	Yes, supporting clients certificates
Integration validation	No, need to build in as part of a flow	Yes, IK will check whether messages are accepted / rejected
End-to-end monitoring	No, EK gives insight in the individual steps by opening a flow	Yes, IK caters for end to end monitoring of a integration assuring visibility of data send and received
Message transformation	Not supported	Yes, using Xslt files users can change for instance field names
Mapping tables	Not supported	Mapping tables are supported
Importing files or databases	Not supported, EK only works with APIs	Supported

You can use the next decision tree, to help you guide on what you need.

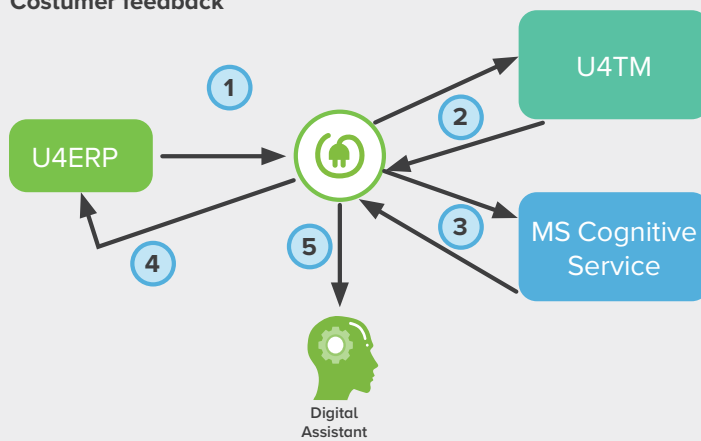


Extension examples

From U4ERP absence to Outlook calendar

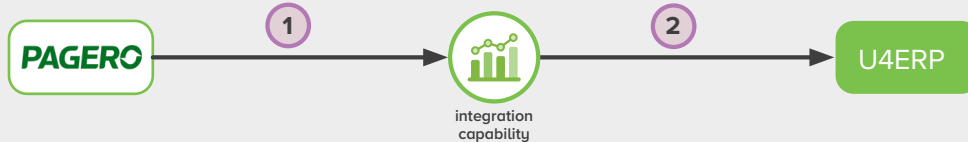


Customer feedback



Integration Examples

Pagero Integration



FTP Integration



Need	Proposed solution direction	Reason
Connection to governmental regulators like VAT, company tax, etc	Integration	These kind of connections often require the need for tenant specific credentials.
Sending a payment file or receive a bank statement from a bank	Integration	These kind of connections often require the need for tenant specific credentials.
Add additional logic within ERP, like address validation / cleansing after new customer/ supplier/employee/etc. Is created/modified, notify if invalid or cleansing completed, copy data between companies etc	Extension	The logic and the examples meet the If This That That structure that gets supported by EK.
Fetch information from a 3rd party service and add to ERP, think about exchanges rates, chamber of commerce of commerce data, credit information etc	Extension	The logic and the examples meet the If This That That structure that gets supported by EK.
Trigger actions and automation in Unit4 based on external events like setting an electronic signature, change of a exchange rate, changing status of a company creditability using APIs	Extension Integration	When based on APIs or XML EK can do the job, when based on files/documents it will be IK
To change the exchanged data in process (mapping tables)	Integration	IK is capable of mappin data.
Ensure an interaction with an external app/party is guaranteed to happen and guaranteed to only happen once	Integration	IK is able to monitor from end-to-end, ensuring tracking the delivery

When your integration is business crucial, meaning high penalties are a consequence, the publicity impact is large or payments are involved; using Unit4 Integration capability is the preferred way to integrate.

Whereas enriching data, making logical connections and automate jobs, Unit4 Extension capability is the preferred way of working.

Whatever the choice is, please make sure your flow includes basic means of error handling, document the architecture of your flow well, and follow the rules of lean development ensuring a fast performing experience.

If you have further questions regarding Extension capability or Integration capability please contact your account manager.

For more information go to:

unit4.com

Copyright © Unit4 N.V.
All rights reserved. The information contained in this document is intended for general information only, as it is summary in nature and subject to change. Any third-party brand names and/or trademarks referenced are either registered or unregistered trademarks of their respective owners. WP200924INT

UNIT4
In business for people

UNIT4
In business for people