

Peace Hills Insurance

ERP LACKED INTEGRATION CAPABILITY AND PREVENTED EFFECTIVE ANALYSIS AND REPORTING

Customer was established in 1982 and are a large Canadian insurance company. They have experienced continual growth and the pains that this can bring.



Vertical expertise

Unit4 Business World beat 5 other bidders due to its financial services functionality, agility and value.

VALUE DELIVERED

Peace Hills can now examine 6 business lines in 9 branches to identify unprofitable lines. Efficiencies, visibility and reporting/ analytics all greatly improved.

“Unit4 Business World’s flexibility lets us get pertinent information out to help us improve efficiency and make better business decisions”

Todd Krepakevich, Peace Hills Insurance

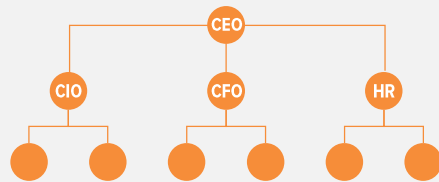
OPERATES IN

Canada

Revenue
\$200m (CAN)

Customer since
2012

No. of employees
200



Why did they need to change?



CHANGE PRESSURES

Governmental Regulations and Compliance

Reorganization and Restructuring

Mergers and Acquisitions

Business Process Change

Financial Management - Driven Change



ROADBLOCKS

Peace Hills’ out-dated legacy ERP limited its ability to examine revenue to expense ratios, so unprofitable lines couldn’t be recognised.

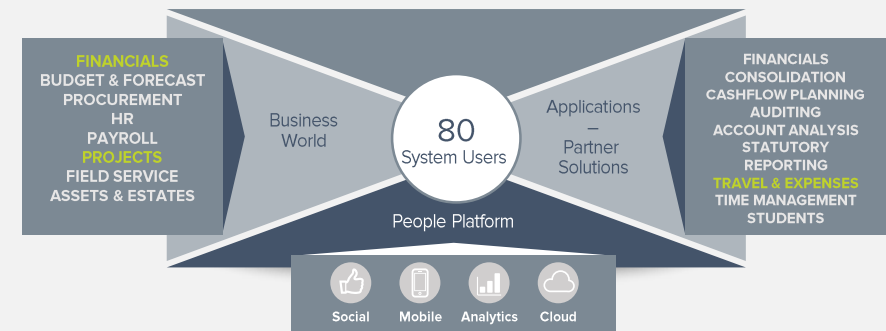


RISKS

If Peace Hills was unable to recognise profitability, it risked non-compliance with solvency regulations. The legacy system increased the risk of non-compliance.

How did Unit4 help?

Business World has provided flexible data and insight into business performance. Manual process are eliminated, internal controls and workflows are much improved. Users can also make changes to the system as required.



What did we achieve?

Monetary savings

Admin expenses data collection was **20%** of Peace Hills’ costs. The process is no longer manual and takes minutes not hours.

Improved operations

Admin Expenses Reports took a day, mostly manual cleaning and organising. Now it takes 10 minutes.

Efficiency and governance

Business World has increased Peace Hills’ staff’s available time by **10-15%**, turning them from data enterers to true analysts.